

Guest circulation appears easy until it fails.

A lobby hold-ups at check-in and unexpectedly the area really feels small, even when square video points out or else. A restaurant entrance encounter bar website traffic and the host stand becomes a tension aspect every night from 6:30 to 8:00. A passage that appeared classy on paper begins to really feel uncomfortable when housekeeping carts, travel luggage, area service, as well as late arrivals all satisfy in the very same ten feet. In hospitality, individuals carry out not determine blood circulation as a technological concept. They experience it in their bodies. They feel it as simplicity, delay, confusion, privacy, comfort, or even stress.

That is where an interior decoration specialist for hospitality earns their keep.

An experienced friendliness internal designer does even more than select finishes or style an area. They shape the undetectable choreography of exactly how attendees arrive, adapt themselves, stop briefly, move, gather, and leave. The very best job often goes undetected due to the fact that it takes out rubbing just before any person may name it. Visitors simply feel taken care of. Staff members work a lot faster along with a lot less effort. Income rooms work the way drivers hoped they would.

In process, guest flow rests at the junction of indoor construction for hospitality, functional organizing, personality insight, and also label experience. A sturdy hospitality design expert recognizes that a wonderful hotels and resort, retreat, dining establishment, or bar may still underperform if blood circulation is actually cumbersome. Good circulation assists company targets. It safeguards impressions, lowers staff pressure, improves access, and also helps every just foot job harder.

Flow is actually not merely action, it is perception

When individuals listen to "circulation," they usually envision corridors as well as walkways. The true problem is broader. Circulation features what guests view when they go into, how rapidly they understand where to go, where they normally stop, whether they think twice at choice aspects, and how their emotion adjustments coming from one region to the next.

I have actually viewed generous entrance halls that really felt cramped given that furniture placement required attendees right into one narrow pathway. I have actually likewise found sleek dress shop properties experience roomy due to the fact that the sightlines were actually clear, the check-in sequence was instinctive, as well as the hanging around expertise was thoughtfully split. Size concerns, but certainly not as long as agreement, presence, as well as logic.

A friendliness space professional pays out close attention to these minutes since hospitality settings talk to a bunch of people. An attendee might show up worn out, lugging bags, viewing kids, taking a phone call, or even making an effort to comprehend a residential or commercial property they have certainly never gone to before. If the area makes all of them stop as well as decipher every next measure, stress and anxiety rises promptly. If the atmosphere quietly guides all of them, the experience thinks polished.

That gloss is rarely accidental. It is actually designed.

The to begin with thirty few seconds make a decision more than a lot of managers expect

Arrival is actually where attendee circulation starts to show itself. The main door, doorway, hold position, celebration workdesk, assistant factor, suitcases drop, and also standing by region all need to have to cooperate.

They additionally need to accommodate different guest types simultaneously. A business tourist checking in for one evening acts in a different way coming from a loved ones getting here for a four-night keep. A wedding ceremony guest moves in a different way from a seminar participant. A restaurant customer going into for mixed drinks has different concerns than someone arriving for a full supper reservation.

An experienced designer for hospitality researches these patterns early. They talk to sensible concerns that spare tasks later on. Where carry out folks queue, and also the length of time perform they stay there certainly? Can a guest instantly pinpoint the check-in point? Is there area for suitcases without obstructing blood circulation? Can showing up visitors adapt on their own prior to being actually asked to make a choice? Carries out the option to escalators intercross through lobby seating in a way that disrupts both uses?

These are actually not small particulars. They influence evaluations, staffing, labor efficiency, and also even normal invest. An attendee who gets into a building and also really feels worked out is actually much more responsive to the bar, the retail edge, the medspa promo, or even the costs room upgrade. An attendee that really feels shed or crowded comes to be restless and also far much less generous in just how they judge the property.

This is actually why a lot of operators bring in a friendliness design expert well just before finishes are actually completed. The moment walls, millwork, service zones, and also MEP coordination are secured, fixing blood circulation ends up being expensive.

How hospitality specialists read a space differently

A general designer might focus to begin with on state of mind, aesthetic appeals, and also household furniture. A hospitality interior design firm VANROOY Design or even any type of veteran interior design organization for hospitality has a tendency to assess something even more split. They review the space from the point of view of at least three teams instantly: visitors, staff, as well as operators.

Guests require clearness, convenience, and also a feeling of appreciated. Personnel requirement efficient courses, heavy duty touchpoints, very clear solution access, and also the capacity to recoup promptly when points go wrong. Operators need to have every choice to support the concept, the brand, business version, and the income plan.

This is actually why hospitality interior design services commonly start with proximity studies, circulation applying, functional job interviews, as well as internet site observations. Excellent specialists view exactly how a morning meal smorgasbord actually carries out. They study for how long a queue creates at a coffee counter. They see where visitors pause to seek signage, where strollers receive stuck, and where company doors must have been actually hidden much better. Those monitorings drive layout improvements that appear subtle on a floor plan however dramatically strengthen the lived experience.

The greatest hospitality professional likewise resists one typical oversight: designing merely for the excellent second. Real estates run struggling. Rainy arrivals take place. Scenic tour groups show up early. Activities discharge individuals simultaneously. Late-night meals deliverance intersects along with room yields. Really good attendee circulation design organizes the disorganized, usual thrill, certainly not simply the polished advertising photos.

The entrance hall as a pressure-tested system

The lobby is commonly handled as a style claim, but operationally it behaves like a transport hub along with softer lighting. It handles appearances, retirements, hanging around, purchases, informal job, social encounters,

travel luggage action, as well as typically meals and beverage spillover. As a result of that, lobby circulation should soak up various rates of use.

An experienced internal developer for hospitality believes in areas rather than single-purpose areas. The access threshold needs adequate breathing room for doors, weather command, and also alignment. The event region needs exposure without coming to be a wall structure of administration. Seats needs to sustain short stands by, longer visits, and also exclusive talks without blocking out flow streets. If there is actually a coffee shop, club, or even grab-and-go counter in scenery, its own line up ought to not cross the arrival path.

One of the best useful design transfer a gateway is actually the production of user-friendly "selection aspects." Guests must manage to comprehend the following measure almost instantly. That often comes down to easy however regimented options: where lighting fixtures is strongest, how the floor guides action, whether sightlines to escalators continue to be visible, and also exactly how furnishings outlines determine paths without looking like barriers.

A VANROOY Design hospitality design consultant, or any knowledgeable expert working at this degree, are going to usually devote substantial time on switches. Switches are where folks decelerate, bunch, or even drift. The route from the main door to event, event to lifts, lobby to restaurant, as well as lift landing to passage all are worthy of close attention. If even one switch is actually unsettled, the entire residential or commercial property begins to feel a lot less composed.

Restaurants, pubs, and all-day eating demand a various type of flow

Hospitality projects end up being particularly interesting when food items and refreshment goes into the mix. A hotel restaurant is actually certainly not simply a dining establishment attached to an accommodation. It often helps several populations instantly: over night visitors, local area restaurants, meeting attendees, and also pub patrons. Their web traffic patterns overlap, but not cleanly.

This is where a hospitality space designer balances ambience along with turnover and also flow. An area might look close in a rendering, but if hosting servers may certainly not pass each other behind banquettes or if ranges and standing by visitors obstruct the bar method, the visitor expertise wears away quickly. The exact same is true in morning meal spaces, where baggage, coffee solution, smorgasbord blood circulation, and also dining table resets all take place within a compressed early morning window.

Several design selections tend to have outsized impact:

- entry as well as standing by areas that perform not spill in to main dining circulation
- clear paths for personnel that avoid redoed visitor interruption
- seating layouts that keep personal privacy without developing dead corners
- buffet and also drink positionings that decrease crossing traffic
- acoustics and also illumination that help folks understand where activity belongs

These are not solely working solutions. They additionally form the state of mind. An area with hassle-free motion experiences calmer and also even more elegant, even at higher tenancy. Guests read through purchase as quality.

I when focused on a dining room where the original strategy placed the multitude stand up straight contrary bench company path. It seemed symmetrical abstractly. Operational, it was disorder. Waiting attendees gathered in front of the stand, pub patrons bent right into the exact same aisle, as well as hosting servers lugging racks had to perform tight turns every few moments. The eventual solution was certainly not significant. Our team changed the hold point, tightened one settling bay, and also reoriented lounge chairs to produce an organic

holding area. The lot of crashes fell just about instantly, and the space felt greater without adding a singular square foot.

Corridors, airlifts, and also guestroom techniques matter more than their beauty level

Many managers center design electricity on public rooms as well as address corridors as background. Attendees carry out not. The route to the space is actually the initial private-phase knowledge after delivery. It requires to indicate tranquility, clarity, and also security.

A hospitality indoor developer takes a look at hallway width, lighting rhythm, door space, housekeeping storage, acoustics, and wayfinding all together. If passages are actually as well dark, also aesthetically hectic, or also monotonous, attendees drop alignment. If service functions leakage into attendee courses, the home starts to feel functional rather than hospitable.

Interior architecture for friendliness plays a significant role below. Where are actually lift entrance halls put? Do they discharge people in to evident routes? Can housekeeping access areas successfully without creating attendees believe that they are actually relocating with a company zone? Are ice makers, bed linen storage rooms, or service cubbyholes offering sound or visual mess at vital points?

There is also an emotional dimension. The walk from the airlift to the space should really feel simple. Guests ought to not need to have to decipher a maze of directional signs after a lengthy journey. Understated signs, improvements in rug design, lighting importance, craft positioning, as well as numeration logic can all lessen cognitive bunch. Good flow commonly indicates fewer decisions.

Wayfinding begins long in the past signage

Signage gets pointed the finger at for wayfinding complications that are really considering complications. If a visitor frequently needs signs to recognize where to go, the format might be asking excessive of them.

A sturdy interior decoration expert for friendliness uses spatial cues prior to depending on graphics. Ceiling heights can mark key as well as indirect zones. Component modifications can easily indicate shifts. Lights strength can easily pull out attendees toward reception or even elevators. Home furniture groupings can easily prepare circulation while maintaining openness. Also aroma and audio can contribute in helping guests comprehend where they are.

That does not indicate signs is insignificant. It implies signage works well as reinforcement, certainly not rescue.

For example, in a resort home with several wings, a friendliness design professional could use distinctive color temperature level, craft systems, or passage carpet signals to assist attendees acknowledge their region subliminally. In a dining establishment, bench might be actually made visible coming from the entrance certainly not just for marketing beauty, yet due to the fact that it clarifies the room's social center and also splits up hanging around coming from eating movement.

When internal style for friendliness lines up with circulation logic, the whole atmosphere comes to be easier to read.

Accessibility enhances circulation for everyone

Some crews still address access as a compliance item that sits apart from design top quality. That is stupid. Rooms that function properly for mobility device users, older guests, family members along with strollers, as well

as vacationers along with luggage generally function better for everyone more too.

A friendliness internal designer who comprehends flow keeps an eye on switching spans, limit switches, door spaces, home furniture spacing, contrarily elevations, washroom approach, and also the legibility of options. They consider where a visitor can pause without thinking revealed. They take into consideration lighting levels for aging eyes. They see to it a guest does not need to navigate an attractive challenge training program to get to a destination.

This kind of thinking additionally reduces staff interference. When a guest can easily relocate confidently on their own, the knowledge believes even more considerate as well as the operation ends up being even more efficient.

Firms understood for friendliness interior decoration solutions typically combine access early due to the fact that retrofits are actually expensive as well as generally a lot less elegant. When it is made in initially, it vanishes right into the total high quality of the space.

Back-of-house organizing is among the most significant motorists of front-of-house grace

Guests may never find solution corridors, storage rooms, housekeeping bases, or receiving paths, yet they feel the consequences when these are poorly considered. Guest flow enhances greatly when team flow is actually protected.

This is one of the clearest indicators of a seasoned internal designer in friendliness. They recognize that social rooms stay restful when service pathways are actually direct as well as very discreet. If team must go across guest courses constantly to restock the bar, very clear breakfast, deliver luggage, or company guestrooms, wrecks come to be unpreventable. So carry out delays.

A convenient interior decoration firm for friendliness will examine situations like space turn over peaks, reception setup home windows, minibar restocking, and late-night waste elimination. The goal is not to disinfect the residential property. Friendliness needs to have lifestyle as well as apparent service. The goal is to prevent the residential property from really feeling overrun through its very own operations.

That balance typically requires shut cooperation along with operators. Professionals that pay attention to frontal desk managers, manager housemaids, F&B leads, and design groups often make far better flow than designers that count entirely on principle panels and layout geometry.

Brand adventure is actually shared with movement, certainly not simply materials

Luxury, store charm, hotel simplicity, urban electricity, and family friendliness all have specific flow trademarks. A tranquil high-end residential property might favor slower switches, split limits, as well as extra private hanging around zones. A lifestyle hotels and resort may encourage cross-visibility between lobby, bar, and also coworking places to generate buzz. A resort may require forgiving flow with generous stops briefly for loved ones, baggage, seashore equipment, and also celebration traffic.

This is where a hospitality interior decoration organization VANROOY Design, or even any equivalent experiment deep-seated market knowledge, may include strategic worth. They hook up label identification to spatial habits. The design is not merely about just how the residential property looks in images. It is about how attendees move by means of it tiny by minute.

VANROOY Design indoor designer for friendliness solutions, for instance, will not cease at selecting furniture and decorative layers if attendee circulation were weakened by the setup. The function of indoor design for hospitality is to support usage as much as state of mind. A wonderful easy chair placed in the incorrect pathway comes to be a hurdle, not an asset.

The very same principle puts on dress shop tasks. A compact impact can still feel superior if every switch is actually intentional. Attendees forgive smaller areas or even tighter internet sites quicker than they eliminate confusion.

What managers must anticipate from a hospitality circulation review

When proprietors work with a hospitality design specialist, the greatest end results normally arise from asking for much more than artistic support. A genuine circulation review must take a look at how the residential or commercial property conducts all over time, tenancy, as well as make use of cases.

Here are actually the kinds of concerns worth evaluating just before design advancement overdoes:

- arrival and also separation peaks, including luggage handling
- check-in, self-check, assistant, and also waiting overlap
- restaurant, club, morning meal, and occasion website traffic conflicts
- guest versus workers flow separation
- accessibility and wayfinding across all key routes

Those five locations alone can uncover a lot of the abrasion factors that harm guest experience.

A thoughtful consultant might use blister designs, annotated plans, straightforward monitoring researches, as well as driver interviews to examine expectations. They may even stroll an equivalent residential or commercial property along with the customer to show how little circulation choices change habits. That hands-on viewpoint is actually typically where the best understandings appear.

Why the appropriate consultant spares funds, certainly not simply style headaches

There is a propensity to view the interior design consultant for friendliness as a graphic part, yet the financial effects are actually sizable. A lot better circulation can minimize queuing tension, enhance table turns, sustain labor effectiveness, reduced wear in the inappropriate zones, and protect fee visitor understanding. It can easily likewise reduce the need for corrective signage, home furniture shuffling, and mid-project redesign.

Some of one of the most costly errors in friendliness occur when flow problems are discovered after opening. A check-in workdesk gets rebuilt. A multitude station actions. Caseloads are lowered to widen a route. Ornamental screens are actually removed considering that they hide sightlines. These are actually preventable concerns when a hospitality interior developer is actually interacted very early enough.

That is actually one explanation numerous drivers seek a friendliness design expert along with sector-specific knowledge as opposed to a generalist. The concerns are actually operational, not just artistic. A professional that has enjoyed real properties function in the course of turn over heights, weekend deliveries, as well as celebration bunches brings an unique degree of judgment.

Key CONSIDERATIONS

Comprehensive Assessment:
A thorough evaluation, encompassing elements like home sleep testing and CBCT scans, is essential to confirm the suitability of the procedure for individual patients.

Expert Provider Selection:
It's crucial to choose a trained and experienced provider, as overly aggressive application may result in complications such as swallowing difficulties, voice changes, or mouth breathing.

Ongoing Monitoring:
Scheduled follow up appointments (1 - 2 months post-op) help to monitor your progress and make any necessary adjustments, as well as offers an opportunity to discuss other potential adjunctive interventions.

PATIENT CASE STUDY

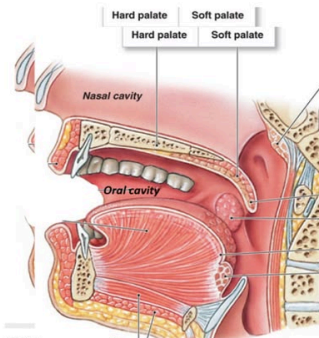


"I found the procedure to be valuable, even after three weeks. The procedure itself was relatively painless, with only slight heat and the feeling of needing. I only experienced minor soreness the next day.

I am breathing about 25-30% better at night [my nasal passages haven't been closing], and because of it, am not waking up in the middle of the night which is helping my sleep." - Dan

PATIENTS COMMONLY REPORT:

- Mild tenderness and sensitivity for 1-2 days
- Some report a prickly sensation, especially with hot, spicy foods or alcohol
- No post-op restrictions - Can immediately resume regular activities
- 20 - 50% improvement in snoring
- >90% Satisfaction rate, results may be long lasting; with possibility of wearing off in 6 - 12 months (in some patients)



THE SOFT PALATE'S ROLE IN Airway Obstruction

The soft palate, a crucial component of the oral cavity, plays a vital role in swallowing and separating the nasal and oral passages. When the soft palate becomes elongated, it can lead to airway obstructions, contributing to conditions like obstructive sleep apnea (OSA). Emerging insights into the soft palate's mechanics have paved the way for innovative and non-invasive treatments, including non-ablative tissue remodeling. This protocol holds significant promise for patients and healthcare providers seeking effective and less invasive solutions to address airway obstructions and related conditions.



Sites of Obstruction

Addressing soft palate obstructions is just one facet of a comprehensive treatment approach that considers the impact of elongation on airway function. This approach encompasses various patterns and sites of obstruction:



Benefits

Note: LightScapel lasers are covered by these FDA 510(k) clearances K121471, K123037, K132661, K141658, K173827 and K213660

NON-INVASIVE

Unlike traditional UPPP (Uvulopalatopharyngoplasty), this procedure is minimally invasive, offering a gentler approach to resolving snoring and airway obstruction.

MINIMAL RISK

- Procedure may not provide the desired results.
- May still be necessary to explore alternative treatments such as tonsillectomy or UPPP.

QUICK RECOVERY

This procedure offers minimal to no downtime and is highly effective for many patients. For optimal treatment outcomes, from 1 to 3 sessions may be recommended.



info@sanitasdentistry.com



www.sanitasdentistry.com

The rooms attendees always remember commonly experience effortless

Ask visitors what they suched as concerning a properly designed hotels and resort or dining establishment and also they may state convenience, environment, or company [VANROOY Design | Hospitality Design Services](#) [hospitality interior design services](#) prior to they ever before mention circulation. But flow is often the hidden factor those imprints constituted. The area believed tranquil because action made sense. The lobby thought accepting since arrivals were intuitive. The bistro believed polished since visitors and also staff were certainly not consistently arranging the same paths.

That is actually the quiet electrical power of a tough interior hospitality designer. They make rooms simpler to utilize without draining all of them of personality. They know that guest flow is actually not a technical reconsideration, however one of the clearest looks of friendliness itself.

When [VANROOY Design](#) Friendliness Design Solutions or any type of knowledgeable friendliness interior decoration services team approaches a task with that said perspective, the result is actually greater than a good-looking home. It is actually an area that organizes folks well. The flow supports the idea. The concept supports

the procedure. And also the guest, usually without understanding why, feels at ease coming from the second they stroll in the door.

VANROOY Design | Hospitality Design Services

149 E City Pl Dr, Santa Ana, CA 92705

(657) 210-4080

<https://maps.app.goo.gl/MoNC7mSDnbwv3TC36>

<https://www.rockstargames.com/search?q=truenorthsocial&tab=games>