

Most individuals don't struggle with motivation for the very first week. They have a hard time because week two and three appearance too similar, progress stalls, and the plan in their head turns into "simply do more." That's where I see results either lock in or fall apart.

In my role as a personal fitness instructor in Slough, I've worked with all types of clients, from first-timers who are nervous strolling into a gym trainer Slough environment, to individuals who have actually trained for years however can't seem to shift body fat. The common thread is not an absence of effort. It's an absence of structure that matches the method bodies adjust. An excellent body improvement Slough plan needs to handle training stimulus, recovery, and nutrition together, then adjust without making the whole thing feel like a clean slate every Monday.

This is the 12-week structure I utilize with clients. It's built for one-to-one personal training Slough sessions, whether you train in a health club, in your home, or through online personal fitness instructor Slough assistance. It also works for people who desire mobile personal fitness instructor Slough style benefit, since the principles stay the same even if the equipment changes.

## **The real objective: change the balance, not simply the workouts**

When customers state "body change," they typically imagine an in the past and after image. Under the hood, improvement is generally a blend of 3 things:

First, your body fat tends to drop when your calorie consumption is controlled and your activity keeps metabolic need up. Second, your strength and muscle tone tend to enhance when resistance training corresponds and progressive. Third, your daily habits tighten up, so the plan stops counting on willpower.

If you just do one of those, you get partial results. If you do all 3, you get that "I feel different in my clothing" impact, even when the scale is slower than you hoped.

In practice, I'm aiming for a plan that offers you sufficient structure to follow, enough flexibility to stick with, and enough checkpoints to fix course before you drift.

## **Why 12 weeks is a sweet spot for weight loss and muscle building**

Twelve weeks is long enough to produce visible modification, but short enough that individuals stay engaged. I've coached clients who attempted to "go hard for six months" and after that silently lost momentum after week 8. They didn't fail. Life just accumulated, and the strategy had no rhythm for adjustment.

In a 12-week cycle, we can do 2 progressions without letting things get repetitive:

- early adjustment where your body finds out the motions and routine
- mid-phase development where you include load, volume, or both
- later-phase refinement where we maintain muscle and squeeze out more fat loss

That rhythm matters if you're taking a look at weight loss coach Slough design training, or if you're trying to construct muscle while leaning out with a muscle building coach Slough frame of mind. The sessions and nutrition are collaborated, not different battles.

## **The summary: how I structure the 12 weeks**

Here's the shape of the plan I run for personal training sessions Slough clients. This isn't a stiff script, but it is the foundation I utilize so no one has to guess week to week.

- **Weeks 1 to 3: Setup and baseline**

We dial in motion quality, set training loads, and start the nutrition targets without making them extreme.

- **Weeks 4 to 6: Progression and momentum**

We include either volume or intensity, tighten meal structure, and present a more purposeful "effort" level in workouts.

- **Weeks 7 to 9: Combine and push**

We keep the best aspects, change what's stalled, and raise the challenge again, typically with smarter changes instead of more difficult ones.

- **Weeks 10 to 12: Peak consistency and maintain muscle**

We go for consistent training participation, safeguard strength, and surface with a final nutrition and activity refinement.

Those stages work whether you're training as an individual trainer for ladies Slough customer, an individual fitness instructor for men Slough client, or simply someone who requires self-confidence and clarity.

## **Training plan basics: what your sessions actually do**

Most clients who hire a physical fitness coach Slough are not going after novelty. They desire outcomes they can feel. The training needs to do 3 jobs:

1) offer your muscles a reason to keep and develop tissue

2) develop enough weekly work to support weight loss without burning you out 3) remain repeatable so you can progress

In one-to-one individual training Slough, we usually settle into a schedule that fits your life. For many individuals, 3 to four resistance sessions each week is a sweet area. 2 sessions can work too, especially with great programming and steps, but you'll typically see slower muscle gains and more reliance on nutrition.

## **Exercise selection: basic beats complicated**

I keep movement patterns consistent since discovering them takes less energy than constantly altering everything. A common week includes:

- a squat or hip hinge pattern (legs and posterior chain)
- a push pattern (pushing for chest and shoulders)
- a pull pattern (rows or pull-downs for back and lats)
- a carry, core, or "stress" motion (practical fitness and posture)

If you're doing home individual trainer Slough training, we adjust those patterns with dumbbells, bands, bodyweight, and a few smart replacements. If you're dealing with a private personal fitness instructor Slough who has access to a fitness center, we can utilize makers and dumbbells tactically, but the objective stays the same.

One thing I won't do is overload you with exercises that feel good but don't advance. Clients sometimes believe variety equates to effort. I'd rather see the exact same core movements improve week after week.

## **Progression: what modifications as the weeks move on**

Progression doesn't need to suggest "include weight every session." Some people can't. Some individuals's joints say no. That's where an excellent certified individual fitness instructor Slough technique matters.

I tend to advance in several of these ways:

- slightly more associates at the same weight
- slightly much heavier weight with the very same representative range
- more sets for a target movement
- a much better exercise variation, like a stricter version of the very same pattern
- a better rest period, when appropriate

For example, if your back squat or goblet squat is presently at a weight where you can do five representatives with effort, we might intend to build those representatives to six or 7 before including load. If you're training in your home and utilizing a dumbbell, we can increase the total by utilizing stops briefly, slower pace, or extra sets when load can't increase much.

That's how functional fitness Slough customers keep progressing without feeling like the strategy runs out control.

## **Nutrition strategy: the part the majority of people get wrong**

You can train tough and still stall if nutrition is random. Many "weight-loss coach Slough" recommendations online swings too far towards extremes or too far towards made complex meal formulas.

My nutrition approach in a nutrition and physical fitness coach Slough program is basic enough to follow, versatile enough to deal with, and firm enough to develop results.

We set a calorie target based upon your beginning point, your activity, and your choices. Then we use protein and meal structure to keep appetite workable and safeguard muscle.

I beware with numbers because specific requirements differ. Rather than providing you a pretend universal calorie count, I use a target variety and adjust based on progress each week or two.

### **Protein and meal structure**

Protein is not a magic word, it's just a useful tool. If you want body improvement and you're training, you require adequate protein to support muscle tissue and recovery.

In my sessions, I typically go for each customer to get a constant protein anchor at many meals. The specific grams daily varies by body size and appetite, however the habit matters more than consuming over an ideal number.

A common pattern looks like: protein at breakfast, protein at lunch, protein at supper, plus a treat if required. Even if you don't wish to count calories, this structure typically makes it much easier to manage total intake.

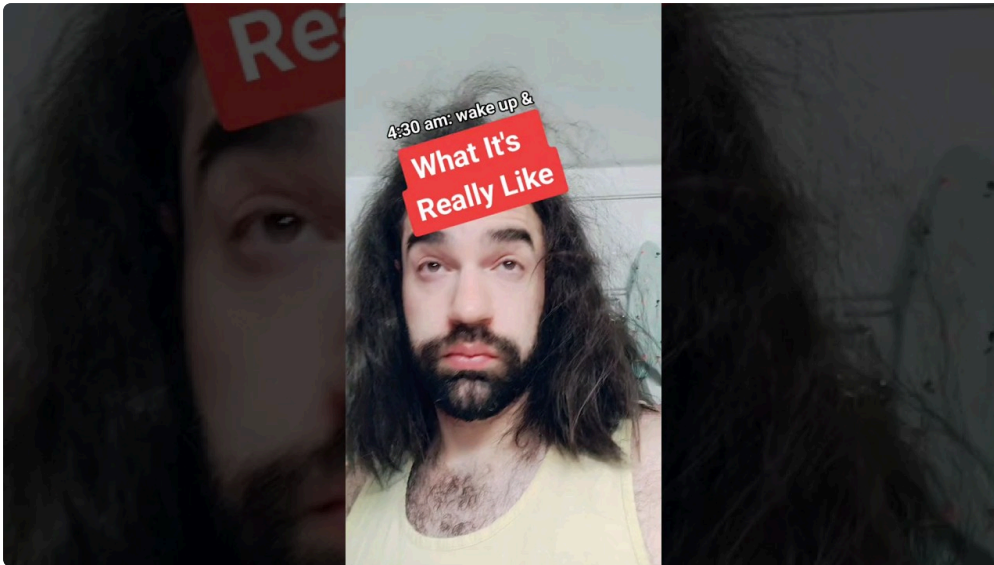
### **Carbs and fats: utilize them for adherence**

Carbs often get demonised, and fats frequently get overpraised. The fact is simpler: carbohydrates assist training efficiency and energy, fats assist satiety and food enjoyment. For weight loss, we keep them within the calorie target.

If your training sessions feel flat, it's normally not due to the fact that you require "more self-discipline." It's frequently due to the fact that your carb timing or total intake is too low for your activity. In a 12-week strategy, we can change without turning nutrition into a punishment.

## How we change during the 12 weeks

We utilize a feedback loop. If weight and measurements are not moving after a sensible duration, we do not panic and cut considerably. We change one variable at a time, generally food portion size or activity level.



For example, if actions have actually dropped since of work tension, we restore them before cutting food again. If you're consistent with food however your training participation has actually slipped, we fix training initially. People can't follow rigorous diet plans if they can't stay constant with training.

This is why I prefer private individual fitness instructor Slough coaching where responsibility is constructed into the regular, whether that's in-person or online individual fitness instructor Slough check-ins.

## Tracking: what to measure so you understand the plan is working

A lot of clients track nothing and after that feel betrayed when results are slow. Others track whatever and feel nervous. Neither helps.

I use tracking that supports decisions. That indicates it needs to be frequent adequate to capture drift, but easy enough that it doesn't control your life.

Here are the procedures I use frequently with clients. I want clearness, not obsession.

- **Body weight** (about 3 to 7 times per week, balanced)
- **Waist measurement** (at the exact same point, every 1 to 2 weeks)
- **Training performance** (associates or load in key lifts)
- **Progress photos** (exact same lighting, every 2 to 4 weeks)
- **Weekly "how it's going" check-in** (energy, sleep, appetite, tension)

When the scale is slow but waist is dropping, I don't require panic. When strength is enhancing but weight hardly alters, I examine calorie adherence and actions. The point is to steer, not to punish.

## A client-ready example week (what it appears like daily)

Let me paint a reasonable photo of how a week often plays out during the very first month. I'm not discussing dream six-pack behaviour. I suggest what occurs when people in fact train, work, and consume like humans.

On training days, you'll do a resistance session that targets the main patterns. We keep the warm-up brief however purposeful, then work sets in a manageable associate variety. I'm usually going for effort that you can sustain across the week, not maxing out every session.

On non-training days, the plan doesn't vanish. It shifts to motion. For most customers, actions are the difference in between "I'm training difficult however not losing much" and "I'm seeing stable weight loss."

If you're working with a health club fitness instructor Slough or a home individual trainer Slough, the motion strategy still matters. It can be a structured walk, a short cycle session, or merely more everyday steps.

This is also where online personal fitness instructor Slough customers typically succeed, due to the fact that I can send out an action target and a check-in, then keep changes tight.

## **First 3 weeks: established your body to respond**

Weeks 1 to 3 are not about punishment. They have to do with developing proficiency and confidence.

A typical error I see with personal fitness instructor near me Slough searches is people getting thrown into a "finest individual fitness instructor Slough" style routine that is too extreme for their existing recovery. They feel aching, miss out on sessions, then blame themselves.

Instead, we start with:

- manageable loads so technique stays solid
- a representative range that builds control before you push intensity
- nutrition targets that are challenging however not crushing

If you're an individual trainer for beginners Slough client, this stage is vital. Your nervous system discovers rapidly initially, and then it needs constant stimulus to keep adjusting. If you miss out on that window by going too hard, recovery issues become the story.

## **Weeks 4 to 6: include development, tighten up habits**

This is where momentum becomes real.

Most customers feel more powerful and more "there" in the gym by week 4. Their weights start to move. Their self-confidence grows. They also begin to get arrogant, either by skipping meals since they feel better, or by increasing training volume too fast.

So the job of a strength training Slough coach is to stabilize ambition with control. We push development in a structured way and tighten nutrition so the scale follows the training.

If you train three days per week, we can include a fourth session just when the week supports it. If you're already exhausted, we include volume to existing sessions instead of adding another day.

That's not "making it easy." It's making it sustainable.

## **Weeks 7 to 9: keep outcomes moving without burning out**

By week seven, some customers hit the wall. It's not because the plan is broken. It's typically due to the fact that:

- you've become more inactive outside the gym without noticing
- you're cutting calories but training effort is dropping
- you're sleeping worse due to tension or schedule

In this stage, I change with judgement. Sometimes we require a somewhat higher food consumption around training days, often we require more steps, in some cases we need **e-trainer Slough** to decrease volume a little so performance rebounds.

A good physical fitness trainer Slough approach isn't simply "train more." It's "train better for your life right now."

This is likewise the window where you'll likely see the biggest visible body change in images for lots of clients, assuming adherence is solid.

## **Weeks 10 to 12: surface strong and safeguard what you built**

The last three weeks choose just how much of your effort sticks.

If you cut too aggressively late in the plan, you can lose muscle, your exercises suffer, and then the weeks after the plan feel like withdrawal. I've seen that occur with clients trying to go from "okay control" to "crash dieting."

Instead, we go for consistency. We protect strength by keeping training quality high and effort honest. Then we improve nutrition simply enough to keep weight loss moving.

If you're utilizing a weight-loss coach Slough structure, that implies keeping the calorie deficit moderate and controlling hunger with protein and meal structure. If you're going for sports conditioning Slough style athletic efficiency along with body composition, it also indicates not sacrificing training output.

The best end to a 12-week plan is the one that makes the next strategy much easier, not harder.

## **Common issues and how I deal with them**

Every strategy fulfills reality. Here are the problems I deal with constantly, and the choices I make.

### **When the scale stalls but you're training well**

First I examine whether actions are down, due to the fact that it's a peaceful killer of weight loss. Then I check nutrition adherence, not just "did you consume well," however portion size and beverages. Liquid calories are the typical suspect, and weekend patterns typically matter more than weekdays.

If training performance is enhancing and measurements are stable, I adjust calories gently before altering training. Cutting training doesn't resolve a nutrition problem.

### **When someone is sore all the time**

Often they started too hot, or they're under-eating relative to activity. In week one or two, the pain is regular. In week four and beyond, consistent discomfort suggests recovery mismatch.

I reduce volume a little, improve warm-up, and get sleep and nutrition back on track. Weight loss coach Slough training has to respect healing, not combat it.

### **When cravings surge in the last third of the plan**

Hunger isn't a character flaw, it's physiology plus routine. I do not respond by "being more stringent." I react by tightening up meal structure, including a sensible high-protein snack when required, and checking whether stress is damaging sleep.

If cravings are high but exercises are likewise suffering, I'll typically move carb timing around training to support effort.

## Who this strategy fits best

This 12-week method works for a vast array of clients, but it's particularly useful if:

- you desire one-to-one personal training Slough structure and accountability
- you choose a clear progression path, not random workout changes
- you've tried diets before but fought with consistency
- you want home individual trainer Slough convenience without losing programming quality
- you're training for body change Slough results, not simply short-term weight loss

It's also an excellent fit for individuals who desire an online individual fitness instructor Slough alternative, because the system is developed on feedback and adjustability. You can be in a fitness center one day and in your home the next, and the plan still holds.

## Getting started: what I 'd ask you in week one

If you employed an accredited personal fitness instructor Slough like me, I 'd start with your truths, not your ideal regimen. I 'd ask about your current training, your injury history, your common week schedule, and your nutrition routines. Then we 'd set a beginning point that you can actually repeat.

A strong plan feels a little uncomfortable initially, then it ends up being familiar. If it never ever ends up being familiar, you won't stick with it.

## The benefit you're truly looking for

Body transformation Slough results aren't simply "leaner." They normally feature:

- better posture and stronger motion patterns
- confidence because exercises feel workable and progressive
- clothing healthy modifications that appear before you feel "done"
- energy enhancements when nutrition and training align
- a regimen you can sustain after the 12 weeks

If you're looking for the best personal trainer Slough option, look for somebody who can change, discuss the reasoning behind the development, and keep the plan grounded in your real schedule. That's what turns personal training into actual transformation.

If you want to train with a state of mind that blends functional physical fitness, strength training, and fat loss training, this 12-week strategy is the structure I rely on. And it's the one I keep repeating with customers due to the fact that it works when it's followed, and it still works when life gets unpleasant, as long as you respond with the best adjustments.