

Getting an LPG fuel cooker geared up is one of these jobs that looks ordinary from the out of doors. A couple of hoses, a few connections, tighten every little thing up, flip the gasoline on, executed. The situation is that "performed" can disguise threat. When it is going mistaken, it does so quietly initially, then loudly: a gasoline scent that received't settle, a flame that behaves oddly, or a joint that weeps under load.

That is why LPG cooker installing is high-quality left to qualified engineers who be aware of equally the appliance and the gasoline process it's becoming a member of. Not simply how you can attach the pipe work, yet how you can determine trustworthy operation, power and venting, and the way to doc what they came across. I even have obvious adequate call outs to realize that a sloppy set up can change into high priced boiler breakdowns, repeated boiler carrier visits, or a landlord's nightmare over gas safety tests.

Below is what a great LPG fuel cooker install correctly includes, the choices that topic, and what you may want to count on from a able engineer.

## **Why LPG cooker installs want the top approach**

LPG is heavier than air, so leaks can pool close ground level. That by myself increases the stakes in contrast with a few different vigor assets. LPG additionally behaves another way from mains gasoline, meaning the cooker most commonly necessities the appropriate LPG jets and occasionally an LPG conversion kit if it wasn't presented hooked up for LPG from the commence.

Another point humans omit is that a cooker install is section of a much wider fuel method. Even in the event that your purely equipment is the cooker, the engineer should still place confidence in the prevailing pipework, regulators, any isolation valves, and whether the manner has been used safely within the prior. If your house has other gasoline appliances, the installing ties into broader fuel defense certificates specifications and the rhythm of gas safety tests.

I once attended a process in which a cooker "worked" for every week after which all started burning with unusual yellow flames at the rims. The cooker itself became fantastic, but the regulator turned into delivering inconsistent power resulting from a worn ingredient. That wasn't a cooker predicament. It became a machine complication, and the restore fascinated more than swapping parts. The precise engineer will treat it as a formulation, no longer a single connection.

## **Before any individual touches the pipe paintings: the engineer's first checks**

A qualified engineer does no longer soar via tightening connectors. They commence by way of information what they may be connecting.

For LPG cooker installing, that almost always involves:

- Confirming the form of fuel the cooker is about for (LPG seriously isn't a specific thing you "imagine").
- Checking the cooker variation requisites, consisting of even if this is twin gasoline or should be switched over.
- Reviewing how the LPG is offered, as an illustration cylinder manner or bulk tank, and even if there's a regulator in the right specification.
- Inspecting the present isolation element, pipe course, and connection types.

If you have already got an LPG setup, the engineer may well ask approximately cylinder length and situation, regulator brand, and the way lengthy the system has been in carrier. It's original to really feel like you're being interrogated, however the ones details modification what risk-free operation seems like.

They can even take a look at the physical environment. A cooker wishes relevant clearance round it for riskless operation and provider access. If there's a decent hole at the back of the unit, it impacts hose routing and the means to examine joints later. That's not about aesthetics, it's approximately having the ability to check for leaks and harm over time.

## **Connection processes: what certified engineers glance at**

There are a few techniques an LPG cooker is also attached relying on the belongings structure and equipment configuration. A inflexible pipe work connection is mostly utilized in business setups, even though versatile connectors is also used in residential installations, equipped they meet central protection and suitability requisites.

The engineer must always be certain the connection procedure is most suitable for the appliance, hooked up to prevent stress on joints, and guarded from warmth and impact. Cooker hoses and fittings are living subsequent to sizzling surfaces, due to busy kitchen visitors, and at the back of furnishings that traps warmth. A poorly routed hose can degrade quicker than you expect.

One functional element I at all times pay attention to is hose orientation and slack. If the hose is just too tight, any motion in the cooker can pressure definitely the right. If it's too loose, it'll get stuck, rubbed, or kink. A useful engineer positions it to avoid the two extremes.

## **LPG pressure and regulator suitability**

With LPG, the regulator is not really not obligatory. If the regulator is wrong or failing, which you can get symptoms like:

- flames which are too low or too excessive,
- choppy burning across burners,
- delayed ignition,
- soot or deficient combustion.

Even if each and every burner "lighting," combustion great concerns. Poor combustion shouldn't be just an potency hassle. It suggests the equipment isn't really running as designed, and that is usually a security concern.

I rely a burger van gas call out wherein the owner turned into certain the cooker used to be the perpetrator given that one burner regarded "lazy" while the van turned into utterly loaded and working. It became out the method regulator was once suffering below specified call for phases. The restore used to be a approach adjustment and verification, not a area change throughout the cooker.

The element for residence installs is comparable: in the event that your LPG technique is underperforming, the cooker conversion on my own may not exact it. Qualified engineers take a look at and assess.

## **Venting and combustion air: the side employees forget**

Whether your cooker is a common hob with an oven and grill, or carries gains that draw combustion air, the installing needs to be sure that the equipment can burn excellent.

Ventilation matters more than other people suppose. Blocked vents, badly organized extractors, or a cooker fitted too snugly into a cupboard can prevent airflow. The engineer exams the encompassing configuration and guarantees the cooker's setup suits brand advice.

If you have an extractor hood, the engineer needs to take into account whether or not it adjustments airflow styles. In a few situations, running a potent extractor in combination with tight rooms can impact combustion. This is mainly principal in homes that have had insulation enhancements or have more recent home windows that lessen typical air flow.

## The absolutely setting up workflow (what "certified" feels like)

A tremendous LPG Gas Cooker Installation is a cautious sequence, with safety and verification on the centre. There's continually a level the place that you may see the engineer gradual down, now not speed up.

Typically the paintings is going like this:

1. **Site and appliance verification.** The engineer confirms the cooker is appropriate for LPG and that any conversion steps had been completed if required.
2. **Pipe course and connection planning.** They money the isolation valve, hose period, routing, and clearance.
3. **Fitment and connection.** They attach the cooker utilising accurate areas and guarantee joints are made properly.
4. **Leak detection.** They experiment for leaks at all imperative joints and connection elements.
5. **Operational checks.** They scan ignition, burner performance, oven operation, and riskless shut down.
6. **Gas protection documentation.** They supply archives consistent with fuel safe practices tasks.

You won't see each scan, however you may want to assume the final verification. If anybody is completely happy to connect and stroll away without checking for leaks and verifying operation, that may be a purple flag.

## A brief installation cost checklist for customers

If you need a simple approach to decide no matter if the activity has been finished right, ask the engineer these questions. A seasoned received't be indignant, they may be completely happy you care.

- Did you investigate the cooker is organize properly for LPG (consisting of conversion if needed)?
- Did you perform a gasoline leak test on all joints and connections?
- Did you investigate ignition caliber and burner overall performance on each and every hob setting?
- Did you determine protected operation of the oven and grill (wherein suitable)?
- Can you proportion the important Gas safeguard certificate / install forms for the works?

(Exact documentation can vary by way of property type and local necessities, yet a excellent engineer should still all the time be ready to clarify what they've recorded.)

## Leak detection and why "smell checks" should not enough

A traditional delusion is that that you may discover leaks by way of odor by myself. Gas defense isn't based on guessing. LPG tactics can leak at a sluggish fee, and based on air flow and airflow, the scent may well be inconsistent.

A certified engineer will use proper leak detection equipment. That entails checking around versatile connections, isolation valves, and any reachable joints. They'll additionally search for symptoms of old subject matters, like brittle hoses, oxidised fittings, or spoil to pipe work sleeves.

If the engineer finds a drawback, the judicious manner is to restoration the purpose, now not just masks it. Replacing a connector devoid of verifying the regulator or pipe work integrity can lead to repeat screw ups.

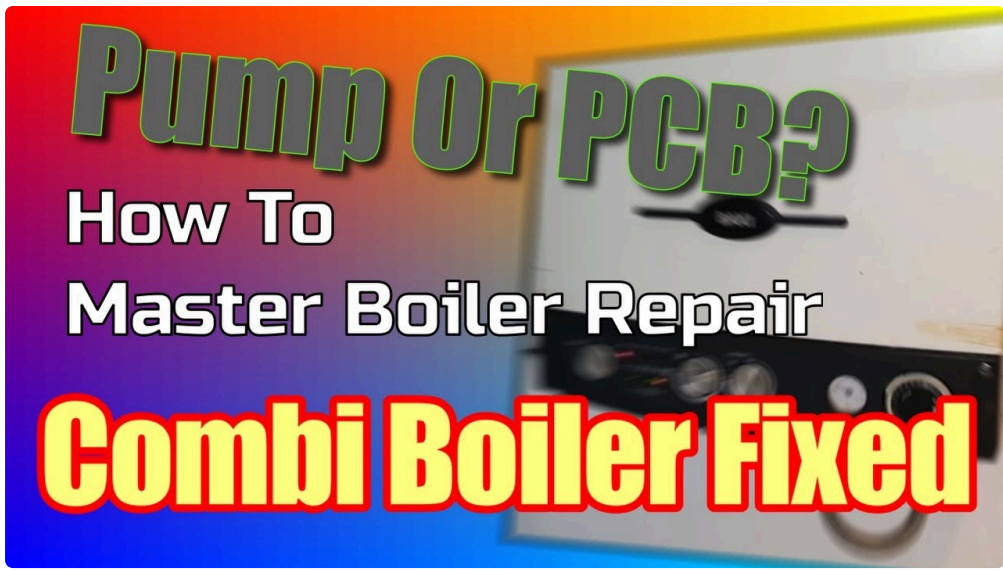
## **Cooker overall performance assessments: extra than just "it lights"**

A cooker that lighting reliably can nonetheless be damaging or improperly set. The flame development must make sense for LPG. Burners will have to ignite briefly and normally. On the low placing, flames must always remain strong and not carry excessively. Soot or chronic yellow flames indicate a mismatch, insufficient combustion air, or drive points.

The oven and grill additionally want focus. Oven operation affects fuel stream in a different way than hob use. A regulator that struggles with particular waft charges may possibly look quality for hob burners however teach up as bad ignition, choppy baking, or delayed heat-up within the oven. A appropriate engineer tests both.

If you will have young ones within the residence, pets, or a hectic kitchen activities, you know how typically you use the hob. That's why performance verification things. You wish unswerving ignition and predictable flame behaviour, not a cooker that only behaves correctly when it feels adore it.





**Common installation headaches (and how qualified engineers cope with them)**

Not each assets is a sparkling, easy more healthy. Real-world installs involve constraints. Here are a number of themes I've visible persistently, with the sort of judgement a certified engineer brings.



**Old or non-common fittings**

Some present installations use fittings that are mismatched, elderly, or not the exact kind for LPG. A ready engineer will now not power it. They will right the configuration with perfect additives.

**Tight spaces in the back of cookers**

Cabinets and built-in items can entice heat or avert entry to connections. In these setups, routing the hose in fact and making sure which you could carrier it later is necessary. A rushed deploy leaves you unable to investigate joints, and that's while small trouble develop.

**Regulator position and cylinder arrangements**

If you might be on cylinders, the regulator situation impacts how the system behaves, certainly in conditions the place the cylinders are uncovered to wind or temperature differences. A respectable engineer will ponder the ones elements while finding out the place and how the system need to perform.

## **Existing fuel home equipment and shared pipe work**

If you have got other gas appliances, the engineer should remember the overall technique. That's where fuel security tests connect with the larger photo. You perhaps making plans a gas cooker installation, however the trustworthy operation of your boiler or gasoline fire carrier time table subjects too. In properties with a boiler breakdown background, to illustrate, it would be worth aligning the timing of servicing so the formula is validated as a whole.

## **Electrical concerns for current cookers**

Some LPG cookers comprise electronic ignition, enthusiasts, timers, or controls that desire pressure. While this is absolutely not plumbing, it really is still setting up fact. The engineer needs to confirm reliable electric connections are in position, and if force seriously is not component to their scope, they'll coordinate with a certified electrician as opposed to improvising.

## **Where plumbing, boiler service, and Air Conditioning can intersect**

It can sound strange, however fuel cooker installing often times bumps into different trades. In apply, kitchens are busy zones with distinct structures sharing area.

If your cooker is being set up all the way through a kitchen refit, plumbers could be adjusting water furnish and drainage. An air conditioning or air-con unit could possibly be put in regional, changing ventilation paths or condensate drainage routes. The engineer need to be accustomed to these transformations on the grounds that they impression airflow and get entry to.

I've additionally viewed the opposite condition: a boiler installing or boiler restoration will get executed first, then later a cooker set up shows that pipe routes had been altered. That's why coordination subjects. A kitchen isn't always only a cooker. It's plumbing, pipe work, electric facets, extractor ducting, and at times air conditioning brackets.

The risk-free mind-set is to deal with the installation field as a system and stay get admission to for inspection.

## **LPG cooker installations for firms (and why they may be stricter)**

For commercial settings like a burger van gas setup, the expectations round installing, testing, and ongoing checks tend to be stricter. These environments revel in vibration, popular action of home equipment, quicker put on on hoses and fittings, and heavy day after day use.

Even if the appliance is equivalent to a house cooker, the utilization trend shouldn't be. A qualified engineer will doubtless pay more realization to mounting steadiness, hose pressure aid, and the practicality of long run inspections. If you're jogging a every day service, the can charge of downtime things. The safest set up can also be the install that reduces routine name outs.

If you operate in a regulated ambiance, you'll want distinctive documentation, and your engineer could be cushty operating inside of those requirements. The goal is regular riskless operation, now not a one-off "seems to be high quality" in good shape.

# Gas security certificates and ongoing responsibilities

Once the cooker is set up, the authentic paintings continues by renovation and habitual fuel safe practices examine schedules.

A Gas safeguard certificates is absolutely not just a piece of paper. It's a report that the appliance and connections meet safety expectancies on the time of inspection. If you are renting, landlords and dealers almost always have compliance responsibilities. If you're a home owner, the certificates can still be marvelous for your very own peace of brain and for monitoring differences over the years.

Where do boiler provider and gas hearth carrier in good shape in? If your house contains a boiler or a gas fireplace, their circumstance impacts the overall fuel process safety. A blocked flue or combustion quandary in one equipment does now not necessarily relate to the cooker, however if it exhibits terrible repairs habits or ventilation concerns, it might probably aspect to a sample. Coordinating boiler breakdown reaction with pursuits service visits is most commonly the most cost-beneficial system as it reduces the probability of repeated things.

Also, while you've had a power flush on a heating gadget recently, you are able to have had plumbers and engineers in the assets. That approach pipe paintings has been disturbed and rechecked. It's a favorable second to align equipment tests in place of treating every single venture as isolated.

## What to do formerly the engineer arrives

You can make the deploy smoother with a bit of prep. While a qualified engineer needs to address most steps, they receive advantages from clear get entry to and precise suggestions.

Make yes you can resolution:

- Is your cooker already set for LPG, or do you want conversion?
- Do you might have the right kind regulator on your LPG provide?
- Are there any present fuel appliances within reach?
- Is there a cylinder or bulk tank regional, and is the isolation factor on hand?

Also, clear the edge across the cooker region. If the engineer demands to maneuver items, dispose of panels, or entry in the back of a built-in house, it helps if that you could do it competently ahead. I've waited on jobs wherein kitchen models had been imagined to be cleared "quickly," and the postpone ended up pushing the engineer into a hurry that no one needs.

## Aftercare: the small conduct that stay away from trouble

Most concerns stand up after install due to the traditional use and minor variations: moving the cooker, bumping the hose, cleansing in the back of items, or replacing adjoining cabinetry.

After deploy, it's intelligent to:

- Avoid pulling or stretching the hose whilst cleaning across the cooker.
- Keep vents and airflow paths clear.
- Notice functionality changes easily, particularly not on time ignition, ordinary flame shade, or soot marks.

If a specific thing looks off, don't try to "tune it" your self. LPG isn't the type for DIY adjustments. The nontoxic course is to guide a technician for inspection and verification.

## Signs you may still set up a go back visit

You must treat these as "name an engineer" signals, not "reveal for some time" signs:

- repeated smell of gas, whether or not it fades in a timely fashion,
- ignition takes longer than it did initially,
- burners produce continual yellow flames or soot,
- flames elevate clear of burner ports,
- the oven or grill heats unevenly or behaves unevenly.

In the related means that boiler fix will become urgent when efficiency transformations, LPG cooker complications deserve on the spot consciousness. A small illness can grow to be a larger one, and the payment of ready quite often exceeds the cost of a swift seek advice from.

## Choosing the accurate engineer for LPG cooker installation

This is the purposeful component workers bypass unless some thing goes improper. You favor an engineer who is not in basic terms able to connecting fittings however constructive with checking out and documentation.

Look for indications like:

- transparent communicate about LPG specifications and cooker conversion needs,
- common clarification of leak checking out and tests,
- willingness to deliver Gas safeguard certificates paperwork or appropriate setting up facts,
- awareness to hose routing, clearances, and reliable get right of entry to.

A strong engineer may also respect your private home. They may still secure floors and surfaces, smooth up after themselves, and hinder leaving constituents free in the back of units.

If you're also handling different gasoline work, you would almost always bundle it. For example, should you need Gas Fire Installation, Gas Fire Service, or Boiler Repair round the related time, aligning visits can lower disruption and assist make certain your complete gasoline setup is running actually.

## Final ideas from the actual world

An LPG fuel cooker installation could believe calm whilst it's done properly. You will have to be ready to faded each and every burner quickly, consider the flame behaviour, and cook dinner without 2d guessing even if the formulation is secure. Behind that calm is cautious planning, properly LPG setup, leak detection, and verification that the cooker is working as designed.

If you ever ask yourself regardless of whether it's "overkill" to apply qualified engineers, reflect onconsideration on the various: guessing at combustion good quality, hoping a regulator [Boiler Service Essex](#) is superb, or relying on smell exams. In kitchens, small blunders emerge as routine annoyances, then protection complications, then larger charges.

The more secure, smarter method is easy. Use a certified authentic, allow them to experiment excellent, ask for the documentation you desire, and deal with the install as the commence of ongoing gas defense, not a one-time hookup.