

A gas hearth will likely be the cosiest element in a room and the most left out. When it's operating, you quit enthusiastic about it. The moment it starts off to behave rather oddly, you detect. Maybe the flame looks lazier than basic, might be it lighting fixtures with a prolong, or most likely it smells faintly at lighting time. In Essex properties, I see this sample over and over, exceptionally in older homes wherein draughts, chimney efficiency, and pipework layouts differ from side road to street.

If you've got a fuel hearth, treating it like a quick-use appliance other than a heating gadget is in which workers get stuck out. Regular servicing is absolutely not approximately being alarmist, it's about preserving combustion refreshing, recuperating reliability, and cutting back the menace of faults going omitted. It additionally protects the potency you assume from a flame that may want to appearance stable, burn competently, and vent appropriately.

Below is the form of life like help I want each home-owner examine ahead of the primary wintry weather breakdown.

## **Why a gasoline fire "just appears to be like first-class" till it isn't**

A gas hearth has a couple of moving materials, however so much of them are invisible. The burners, jets, injector aeration, thermocouple or flame sensing, pilot meeting, and the approach air enters the appliance all result how it burns. Over time, soot, dirt, and traditional soot deposition can build up. Even if the hearth nonetheless lighting fixtures, tiny transformations inside the combustion method can suggest you're getting less warmth into the room and more waste out of the flue.

There's also the human issue. Many persons in basic terms run the fire sometimes. A gas appliance that sits idle for months can grow considerations that don't educate up all the way through a quick try. A moderate seal leak, just a little of particles inside the control valve edge, or a sluggish ignition reaction can take a seat there for weeks, then prove up on a cold night time whenever you need the room hot.

And since fuel fires are in general used along other heating systems, there's a moment layer. If your relevant heating boiler is due for Boiler Service Essex work, or you've had Boiler Repair Essex within the earlier, you already know how related matters can consider. Pressure changes, ventilation balance, and even wide-spread air flow in older residences can have an impact on what "basic" looks as if.

For this rationale, a real Gas Fire Service Essex appointment is set extra than a swift sparkling. It's approximately checking that the equipment behaves as designed.

## **What a excellent carrier truly checks**

When a carrier is completed well, it's methodical. You can't wager your method because of combustion and defense. A useful engineer will check up on the hearth for obvious trouble, then follow via with operational exams that ensure the burner and controls are operating inside of trustworthy parameters.

In my experience, the biggest importance for property owners comes from 3 regions:

First, combustion satisfactory. The flame trend, burner ignition characteristics, and how the fireplace operates less than known circumstances tells you a whole lot. If the hearth burns too yellow, produces extra soot, or seems to fight to set up the flame, that elements to dust, injector subject matters, improper aeration, or venting disorders.

Second, security controls. Many gas fires rely upon flame supervision. If the flame sensing detail or its connection is drifting out of spec, the fire can even faded unreliably or shut down incorrectly. Some faults are glaring. Others are sophisticated, which is why servicing subjects even when the hearth looks "frequently okay."

Third, integrity and air flow. Flues, terminals, and the approach air is supplied are component of the security gadget. Even small changes to the open air termination sector, like debris or wind-consequences, can be counted. Indoors, furnishings placement, draughts, or more moderen ventilation enhancements can impression airflow.



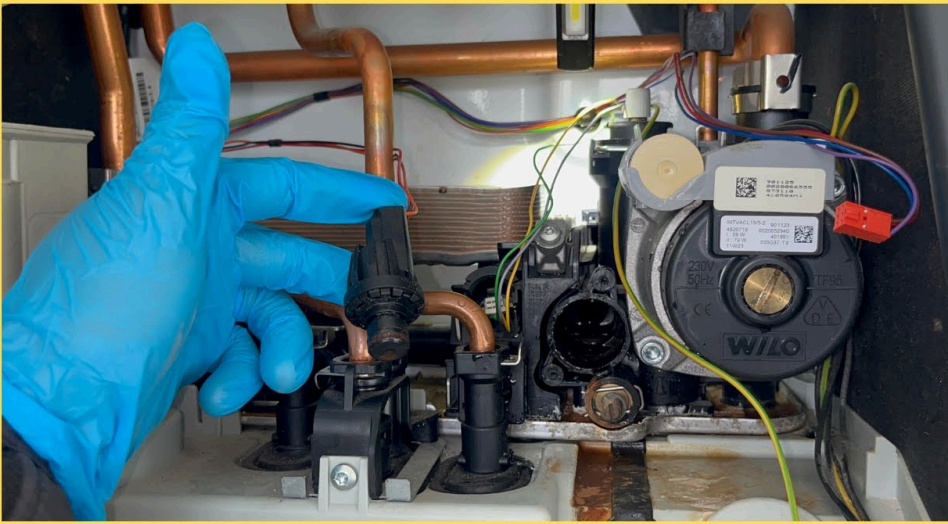
If you stay close busy roads or in older Essex terraces, you'll also realize how effectively soot and dirt discover their method into areas you wouldn't think to look at. A provider deserve to take that truth into account.

## **The hidden negative aspects householders sometimes miss**

Most families trouble approximately the dramatic things, gasoline scent, flames "going mistaken," or the hearth not lighting fixtures at all. Those are principal indications, however there are other negative aspects that are tougher to spot.

### **1) Soot and incomplete combustion**

When combustion isn't blank, soot can variety in which it shouldn't. That can suggest flawed air-gas mixing, blocked burner system, or flue limit. Soot isn't just messy. It could also be a symptom of a air flow obstacle, which is why it should still be taken critically.



## 2) Slow ignition and repeated cycling

Repeated attempts to mild can over-run security timings and create frustration. You might get it running with just a few tries, yet the ones repeated cycles can mask an underlying keep watch over main issue.

## 3) Flue and vent functionality changes

Flues do not remain well suited invariably. Outdoor terminals might possibly be plagued by weather, hen activity, or debris. Indoors, older flue runs can assemble soot over the years. If you've recently had dwelling renovations, new home windows, or loft insulation changes, airflow patterns can shift.

A superb Gas Fire Service Essex go to appears in any respect of that as a connected equipment, not a standalone ornamental appliance.

## Efficiency isn't simply "greater warm"

It's tempting to deal with efficiency as whatever thing for boilers and primary heating. For gasoline fires, performance still matters, however in another way. When a fuel fire burns properly, you get a good flame and extra warm transfer into the room. When it doesn't, possible turn out with a hearth that appears lively however feels underpowered.

In less warm Essex evenings, I've considered this play out in genuine lifestyles. A owner of a house turns the fire on, waits, and feels that the room on no account warms suitable. They may suppose their insulation is the culprit. Sometimes this is. But recurrently the fire is losing functionality on account of burner cleanliness and aeration issues.

A service can restore the approach the equipment establishes flame and can expand how hopefully it continues burning with out flare-u.s.a.or inconsistent output. That's no longer simply consolation. It also affects strolling expenses over a season.

## Gas hearth safety investigate vs. Gas protection certificates Essex

You'll hear phrases like Gas safe practices certificates Essex and Gas Safety Check Essex used interchangeably in casual communique. They are associated however no longer equivalent.

A gas defense certificate is generally related to gasoline safeguard responsibilities for rented residences and contains inspection and checking out of fuel home equipment. A Gas Safety Check Essex might refer extra extensively to a specialist security inspection of a gasoline appliance or procedure.

If you're a landlord, you'll would like the right bureaucracy and the exclusive scope that applies to your property. If you're a home owner, you still benefit from the identical area: checking that the appliance is trustworthy, that combustion is acceptable, that ventilation [LPG Essex](#) and flue preparations are first-rate, and that any defects are known early.

In the two circumstances, the highest end result is steady: good operation, riskless venting, and clear advice approximately what demands focus.

## **When you deserve to booklet a Gas Fire Service Essex (and whenever you shouldn't wait)**

If your fire has been off for months, it's elementary to attend unless it fails. I'd motivate you no longer to. The challenge with ready is that the fault may perhaps involve a thing that worsens with use, or one thing that solely turns into visible lower than load.

Here are real looking triggers I see in most cases:

- Your fireplace struggles to light, specially after it's been unused for some time
- The flame pattern ameliorations greatly, or it burns with greater soot than earlier than
- You scent gasoline for the period of lighting fixtures tries, or there is a amazing odour at any time
- The fire assists in keeping shutting down, or the pilot appears to be like volatile
- There are indications of terrible venting, like condensation considerations close the hearth discipline

If you ever scent gasoline strongly or suspect a critical leak, do now not "look at various it later." Turn off the fuel furnish and get pressing assistance. A carrier consult with is the true subsequent step once any instant protection situation is addressed.

## **What approximately LPG Essex and different gas versions?**

Some residences in Essex use LPG in preference to usual gas. It is probably a rural placing or a specific belongings association. An LPG setup can behave in a different way, and materials, controls, and combustion qualities don't seem to be normally kind of like normal gas home equipment.

If your property is supplied with LPG Essex, or you are undecided what delivery you've got, this issues for servicing and any practicable servicing selections. A powerfuble engineer may want to verify the gasoline category, the appliance configuration, and be sure the proper operation for your mannequin.

If you've currently had a replace in supply, a switch between fuels is not really whatever thing to deal with casually. Gas fireplace conversion, if acceptable, have got to be taken care of thoroughly with the best method and commissioning exams. The fallacious way risks protection and performance complications that are challenging to restore later.

## **Common purposes gas fires lose performance**

Most service calls usually are not dramatic. They are tidy, reasonably anxious, and fixable as soon as identified. Over time, the motives repeat.

Dust and fluff inside a room will in the end make its way into combustion areas, mainly if the hearth is situated near curtains, shelving, or busy walkways wherein air flow brings debris along. Burner ports can gather debris. Jet assemblies can also be stricken by contaminants. Even when you ease around the fire incessantly, the working internals are blanketed out of your family unit cleaning resources.

Then there are the exterior influences. Essex houses can see good wind-pushed weather that influences draughts and vent efficiency. Some homes have flues that reply more to climate changes than others. That's why "it really works superb on calm days" is a clue, no longer reassurance.

Finally, controls and sensors can drift. Flame sensing is dependent on good situations and easy contacts. When they degrade, ignition behaviour can also come to be unreliable. Servicing is how you trap the early degrees instead of waiting for a whole failure.

## **Gas fireplace installation vs. Boiler installing, what home owners get wrong**

When humans you have got Gas Fire Installation Essex, they frequently point of interest on appearance and location. Those count number, but deploy could also be approximately risk-free venting, just right clearances, and desirable connection to the gasoline give.

The identical mind-set suggests up whilst property owners plan Boiler Installation Essex. They may well retailer for the unit, compare efficiencies, and desire pipe routes that appearance tidy. But in either circumstances, trustworthy gas programs are about extra than the seen elements. It's approximately the hidden pathway where fuel, air, combustion merchandise, and tension engage.

A respectable setting up may still bear in mind:

- The flue route and the way it vents
- The top gasoline connection, rated pipework, and secure isolation
- Clearances round combustible supplies
- The room's air flow prerequisites, quite in more hermetic buildings

If you've ever watched a fire paintings perfectly in one estate and behave differently in yet another, the installation and air flow context are assuredly the explanation why.

## **A short notice on ventilation and "new electricity" upgrades**

Many Essex property owners have more suitable windows, brought insulation, or reduced draughts through the years. That could be important for comfort and accounts, but it could possibly additionally amendment indoor airflow.

A gas hearth relies on a risk-free air supply for combustion and proper flue operation. If air flow conditions swap, combustion first-rate can exchange too. Sometimes the outcome is instant. Often it appears to be like gradually as you run the hearth greater in wintry weather.

This doesn't imply you could ward off calories improvements. It method you ought to carrier your equipment in a while and, if wanted, get real preparation to your extraordinary setup. A effectively-run Gas Fire Service Essex fee will flag if air flow or vent performance seems to be compromised.

## **If you've had a boiler breakdown Essex, assume knock-on effects**

Boiler breakdowns have a tendency to snatch consideration, and understandably so. But the presence of a relevant heating device doesn't isolate your fuel fire from the house's overall behaviour.

If you've had Boiler Breakdown Essex matters, which includes habitual burner faults, stream trouble, or rigidity-relevant behaviour, your own home's heating styles can exchange. People use the fireplace extra to atone for boiler outages. That raise in runtime can reveal early trouble in the fireplace that were in the past hidden by means of occasional use.

So if your boiler has been unreliable, it's clever to treat your gas hearth as part of the similar winter plan. A provider prior to the busiest nights repeatedly saves time and tension later.

## **What about drive flush Essex and why it commonly comes up**

Power flush Essex prone are approximately crucial heating techniques, not gas fires. Still, I more commonly get questions about no matter if a vigor flush will "fix heating issues close the fire."

In so much households, it won't directly deal with gas fireplace performance. But it might swap the final consolation and temperature administration inside the dwelling. If your boiler is struggling with movement and radiators aren't heating frivolously, you may also count greater on the fuel hearth for designated rooms. The hearth may also then be used longer, growing the possibilities of soot build-up and burner put on.

If you're planning Power Flush Essex paintings thanks to boiler warning signs, it's still price servicing the gasoline hearth across the similar time. Think of it as aligning the two tactics you easily use.

## **Where plumbers, heating engineers, and gas consultants in shape in**

In precise existence, property owners seek for support lower than the huge umbrella of Plumbing Essex, considering that's the term that feels frequent. A lot of the paintings is certainly plumbing comparable, but fuel appliance work wants the exact qualifications and the precise checking out equipment.

For a gas hearth service, you would like an individual who can do properly gasoline appliance servicing, carry out splendid tests, and propose competently. It's also powerful if they can coordinate along with your wider procedures, like if you happen to're making plans Aircon Essex or Air Conditioning Essex upgrades and want to be sure vents or airflow variations don't unintentionally interfere with present air flow patterns close to the hearth.

Yes, it sounds abnormal to attach air conditioning and fuel fires, however I've obvious how preservation and comfort improvements can regulate airflow and room layouts. It's no longer approximately blaming new techniques. It's approximately recognizing that homes are dynamic.

## **"It's simply a burger van" and the magnitude of properly gas safety**

You would possibly have spotted bizarre searches round Burger van gas Essex. Catering premises, mobile trucks, and commercial catering use gas home equipment oftentimes, they usually function below various pressures: extra uptime, heavier usage, and extra danger if security exams are behind schedule.

Even regardless that your property gas fire is a totally diverse environment, the shared lesson is regular. Gas platforms could be inspected, maintained, and checked with the true strategy. Usage intensity magnifies any weak point. That's why frequent tests aren't a "superb to have" in industrial settings, and it need to suppose just as life like in a domestic one.

If you ever run a shared space or have a commercial unit nearby that affects your own home's shared procedures, it's nevertheless well worth getting desirable assistance.

## **How broadly speaking may want to you carrier a gasoline fire?**

A simple mindset is to carrier it as a rule other than basically whilst anything goes unsuitable. Many owners target for an annual service, particularly in the months greatest as much as height wintry weather use. If the equipment is used regularly, or should you realize efficiency modifications, servicing faster makes sense.

If you have a condo belongings, your obligations will keep on with the native legal requirements for gasoline security. A legit can recommend the precise schedule and scope based mostly for your appliance model and assets setup.

The key factor is discreet: a provider may want to align with how your hearth is used and the way it behaves in authentic prerequisites, not only a generic date at the calendar.

## **What one can do among services**

You don't need to show into a technician, yet one can reduce the load on the equipment and see concerns early.

Keep the space around the hearth clear. Curtains, free rugs, and ornamental presents can impression airflow. If you clear the fire encompass, do it lightly and keep moving inner parts.

If you might have pets, be further mindful approximately fluff and hair around any equipment facet. I've cleared a great deal of burner sector themes that begun as "simply a little of mud," considering that they have been in no way checked except the flame looked unsuitable.

And if the hearth starts offevolved to behave in another way, don't forget about it. A minor swap now is mostly more uncomplicated to repair than a greater critical fault later.

## **Choosing the precise engineer in Essex**

You'll to find preferences ranging from swift callout expertise to full servicing teams. The preferable resolution relies upon on what you desire, however there are reasonable indicators.

You need transparent communicate approximately what is going to be checked, what ingredients could possibly be changed if obligatory, and the effect of the safeguard testing. A respectable skilled doesn't deal with the carrier like a guessing video game. They provide an explanation for what they to find in undeniable language.

It's also really worth selecting an individual who can make stronger the broader family unit gasoline landscape. If you're handling Boiler Repair Essex or Boiler Installation Essex tasks, and you additionally need Gas Cooker Installation Essex or Gas defense certificate Essex paintings, it supports to have a workforce that knows gasoline equipment coordination throughout your own home.

Some engineers additionally paintings across linked consolation techniques like Aircon Essex and Air Conditioning Essex. Even if they aren't the installer for every part, having a broader view may be extraordinary in case you're planning renovations.

## **A widely used carrier day, what householders experience**

A provider go to is continually common. The engineer arrives, confirms the appliance small print, and inspects the fire and ingredients. They'll most probably perform security and performance testing for the duration of operation. If they discover concerns like blocked ports, sooting, or worn additives, they'll explain the suggestions and what needs doing to bring the equipment back into reliable, powerfuble operation.

You may well understand that the service carries time spent listening as lots as browsing. Gas fires will have diffused combustion sounds, and ignition behaviour gives clues. The remaining file need to replicate what became verified and what final result turned into completed.

If any work wishes doing, you desire clarity on pricing and scope. The worst experiences take place when homeowners suppose they're being led simply by indistinct factors. A useful engineer should be direct, with enough detail so one can understand why the work matters.

## **When to bear in mind Gas Cooker Installation Essex rather than patching problems**

This could hold forth matter, however it comes up. Some families have the two a gasoline fire and a fuel cooker, and folk commonly try to clear up broader remedy or cooking things by way of making use of one appliance greater.

If you're handling repeated servicing wishes or you are upgrading your kitchen, Gas Cooker Installation Essex can shift your home's usual gas utilization patterns. That can difference how continuously the fire runs, which affects servicing frequency and soot construct-up. It's no longer the comparable process, yet it sits in the related family events.

Planning these changes together can prevent surprises. If you might be changing appliances, it's also an effective time to check your broader gas defense tasks and agenda splendid exams.

## **Final thoughts on conserving your gasoline fire riskless and efficient**

A gas hearth remains a gasoline equipment, and it deserves the kind of care you'd provide your boiler. Servicing maintains the flame sturdy, helps combustion burn cleanly, and catches small problems until now they develop into iciness emergencies. In Essex, wherein homes range greatly and climate may well be unpredictable, that general recognition makes even extra difference.

If your fire is due, don't await the primary chilly snap. Book your Gas Fire Service Essex appointment, get the defense assessments achieved accurately, and enjoy the gain you essentially desire: a fireplace that lights reliably, burns cleanly, and warms the room with out fuss.

If you'd like, inform me what kind of fuel fire you have got (balanced flue or room vented when you know it, and whether or not it makes use of a pilot or direct ignition). I can advise what indications to watch for and what questions to ask throughout the time of a service seek advice from.