

A gas safety certificate sounds like bureaucracy until eventually you see what it protects. I had been on a lot of visits the place the issue changed into no longer dramatic, it used to be really incorrect settings, blocked air flow, a flue that wasn't doing its process, or an appliance that were serviced too lengthy ago. The variety of issues that may build quietly, then without notice topic.

If you rent a assets, run a industry with gas appliances, otherwise you simply choose peace of brain in your property, the query is continually the related: what precisely do I want, and while do I want it? Let's stroll by using it in undeniable, useful phrases.

What a fuel safe practices certificate if truth be told proves

A gas safeguard certificates (quite often which is called a Landlord Gas Safety Record inside the UK) is a report made after a qualified gasoline engineer inspects gasoline appliances and the pipework. The engineer checks that the home equipment are risk-free to make use of and that key security standards are met at the time of the visit.

That "on the time" wording matters. The certificates is absolutely not %!%3e96c247-1/3-46be-a9d9-e24dccc848a7%!% assure. It's a snapshot headquartered on what the engineer can degree and practice right through the inspection, plus the equipment's condition and deploy.

Also, a fuel security certificates isn't always the same thing as a boiler carrier, boiler restore, or a gas hearth provider. Those are maintenance or fix sports. A gasoline safety determine can involve maintenance steps, however the certificate is namely about safeguard compliance and recording the results.

In life like phrases, the certificates tells you things like no matter if appliances have been top tested, whether or not they handed the suitable exams, and what, if anything, needs interest.

Who desires a gas safe practices certificate

Most other folks handiest end up aware about their tasks when they become a landlord or take on tenants. In that challenge, you in most cases want an annual fuel safeguard inspect for each and every belongings the place there are gasoline appliances and you're accountable for them.

If you run a advertisement setup, the development is similar, though the obligations and wording depend upon your premises, the kind of fuel appliances, and your duties less than well being and safeguard and landlord arrangements. A cafe, a takeaway, or a burger van fuel setup that uses fuel for cooking is an effective example in which recurring exams stop small disorders fitting downtime.

Even while you usually are not legally required to produce a certificates for your home, the identical inspection logic still applies. Gas is not the location to gamble. If anything is off, the cost of being mistaken is high.

When you desire it: the annual rhythm, plus one of a kind moments

For properties wherein you are required to manage assessments, the usual rhythm is once each yr. That sounds trustworthy until you handle the true-world gaps: new tenants, ignored appointments, home equipment changed mid-12 months, or a flue work that occurs after a preservation.

Here's the purposeful approach I think of timing.

- Schedule the following inspection as you technique the 12 month mark, not after it. If an engineer discovers an subject that desires restoration, ready except after the certificate is due can flip a hassle-free repair into a forced interruption.
- If you put in new gas home equipment, alternate pipework, or update a boiler, that can be a aspect in which you desire the installation and commissioning to be handled thoroughly and recorded. For many vendors, that suggests any other circular of exams prior to the yearly cycle.
- If a gasoline appliance stops running thoroughly, differences performance, or you detect indications like yellow flames, soot, condensation issues, smells of gasoline, or repeated burner ignition trouble, don't expect "this may settle." Arrange a boiler fix or a fuel equipment name-out first. Then bear in mind how instantly you should have a proper fuel safeguard test once more based on what became interested.

There can be the "shared accountability" angle. If tenants run their very own protection, or in the event that they have a selected equipment which you do no longer arrange, you continue to want readability on who controls what. When certificate get contested, it can be hardly ever about gasoline engineering fine. It is normally about misunderstandings, missing home equipment at the schedule, or uncertain responsibility.

Gas safeguard certificate vs boiler service vs boiler setting up vs boiler repair

These phrases get blended up all the time, distinctly in busy families and busy letting businesses. They are relevant, yet they are now not interchangeable.

A **gasoline safe practices check** is set protection contrast and recording.

A **boiler service** is repairs. It ordinarily includes inspecting parts that impression efficiency and combustion, checking operational security features, and making certain the boiler runs as intended. Many boiler makers suggest annual servicing, and landlords continuously do either carrier and safeguard take a look at throughout the related stopover at to restrict disruptions.



A **boiler installation** is the paintings of installing a brand new boiler, connecting it effectively, environment it up properly, and commissioning it. Installation may want to be executed with the aid of a in a position engineer who can attempt and examine functionality and safety.

A **boiler repair** is responding to faults. It should be as sensible as exchanging a part, or it could possibly be greater problematic if the fault is tied to process stability, water circulation, or controls.

One state of affairs I see continuously: a boiler that has a recurring obstacle, like noisy operation or cycling. Someone thinks they simply want a brand new boiler provider. Sometimes they do. Other instances it will not be a renovation dilemma at all, it's a efficiency difficulty in the approach. That's where greater measures can matter, as an example a **vigour flush** in programs that experience debris and sludge limiting stream. A drive flush is not very component to a typical security money, however it becomes primary while functionality and protection are intertwined, distinctly if there are indications of negative movement, uneven radiators, or routine blockages.

What will get checked right through a gas protection check

You will customarily have a fuel engineer who turns up, identifies what gas home equipment exist and in which they may be put in, then consists of out a sequence of checks. The specifics rely on the appliances reward. A boiler demands exceptional exams to a fuel fireplace, and a gas cooker install in a industrial setting has its possess necessities.

Still, the assessments have a tendency to have about a hassle-free issues: combustion safe practices, ventilation, equipment condition, integrity of pipework, and dependable operation.

Here's the variety of guide that normally receives included and recorded.

- Visual inspection of every fuel appliance and the encompassing set up, which include flues where relevant
- Checks for proper combustion and trustworthy operation at some point of operating conditions
- Examination of gasoline pipework and connections for symptoms of ruin, incorrect installing, or leaks
- Verification that air flow standards are met for the equipment location
- Recording results for each and every appliance so the certificates evidently lists what became inspected and what happened

If a gasoline cooker is portion of the assets, that will encompass an evaluate of the way it truly is linked and whether it seems to be wisely hooked up and in precise condition. If you have a fuel fireplace, it will commonly contain tests that are distinctive to that appliance kind and its flue or ventilation design.

If the estate uses **LPG** rather than mains fuel, the activity still specializes in security and properly operation. However, the tips of the appliance, regulator, and setup should be completely different, so that you desire an engineer who works without difficulty with LPG programs. I even have heard of families being "sorted" with the wrong assumptions approximately fuel fashion, and it'll create confusion later while you try and tie provider background to the proper certificates.

Residential, letting, and commercial changes that vacation folk up

In buildings, it may well suppose like the whole lot revolves across the equipment itself. In letting and business spaces, the paper path topics just as a great deal as the actual inspection.

For landlords, the largest rigidity factors are by and large:

- ensuring all proper appliances are in general indexed and inspected
- making certain the certificates is produced and furnished inside the required timeframe
- going through delays whilst a fix is wanted beforehand the engineer can signal off

For industrial premises, the strain regularly shifts to continuity. If you run a kitchen or a retail unit, shutting fuel home equipment down for an inspection seriously is not all the time primary. You desire an engineer who will be versatile with time home windows, and also you wish to have the bureaucracy treated appropriately so the industry isn't left trying to explain a gap all through an audit.

If you operate a burger van gas setup, the equal common sense applies. Even nevertheless it maybe a compact setup, the tests nonetheless remember given that small connection things or lacking ventilation can transform great immediate. It additionally facilitates to hinder preservation and trying out data consistent, so that you can teach that the technique is sorted, now not just used.

What happens if a specific thing fails or wants attention

A gasoline protection verify will never be designed to "move" every little thing so all and sundry feels amazing. When some thing is risky, it needs correction. Depending at the appliance and the fault, the engineer would possibly propose that the equipment %!%%edc82e84-bfa2-4c6e-beef-a069c094fc16%%!%% be used until eventually it's repaired, adjusted, or changed.

This is one intent it facilitates to guide early as opposed to looking forward to the certificates deadline. If the engineer reveals a hardship that requires a **boiler repair**, a **gasoline fireplace service**, or a restore to setting up elements, you are able to schedule the keep on with-up evenly.

In true life, there are just a few general categories of influence:

1) Everything is secure, and the certificate gets issued with out a issues. 2) Minor alterations are potential for the duration of the seek advice from, and the engineer can continue with sign-off if security is restored. 3) A restoration is needed, and sign-off is either withheld except the restoration is completed or the engineer makes tips that trigger keep on with-up. 4) In greater serious instances, the equipment is shut down pending restore.

If you are handling a letting belongings, you also desire to element in what that you would be able to keep in touch to tenants. Safety comes first, and a clean rationalization reduces warfare. I actually have considered tenants panic once they listen "fuel element," even if the engineer has merely determined a ventilation hassle that changed into fastened without delay. Calm verbal exchange and quick action preclude both chance and needless rigidity.

How to prefer the true engineer for gasoline defense checks

You favor human being who does this paintings steadily, now not a fashionable handyman who "is aware gasoline a little." A fuel security take a look at have to be conducted through a qualified pro who can legally carry out the inspection and obstacle definitely the right documentation.

When I'm advising valued clientele, I have a tendency to look for 4 things:

- They can surely checklist what home equipment will likely be inspected and the way they will listing it.
- They ask simple questions until now arrival, in particular if the estate has older home equipment or special setups like LPG.
- They can integrate the safety check with real looking renovation, to illustrate a **boiler service** whilst they're already there, if that matches your pursuits.
- They dialogue what necessities repair in undeniable terms, and so they file the activities.

If you furthermore may want relevant work, the engineer will possibly not conceal all the things, but they need to coordinate effectively. For example, if a boiler method demands a **pressure flush**, that's a specialist procedure and have to be treated accurate. If pipework or get right of entry to is blocked, you can also want **plumbing** work past the boiler room. In some properties, workers guide an aircon set up or air conditioning upkeep along heating and fuel checks to minimize disruption, yet don't anticipate one contractor can duvet the lot accurately. Heating, gas, ventilation, and refrigerant tactics are alternative trades with totally different safety necessities.

A speedy booklet to what you need to have organized earlier than the appointment

Preparation doesn't need to be tricky, yet it saves time and avoids missed appliances. I probably recommend treating it like you might be preparing for an audit, not a informal talk over with.

You should still be equipped to:

- Confirm which home equipment are current and accessible
- Provide entry to the boiler cabinet, gas hearth position, and any important shut-off points
- Make convinced air flow grilles and flues should not obstructed
- Let the engineer know if there had been any up to date worries, even minor ones like "it's been taking longer to ignite"

If it's miles a rented estate, also ascertain the recent touch for key get admission to. Missed appointments can cause expired certificates, and expired certificate create true felony and defense tension. When time is tight, it can be better to be trustworthy approximately availability and e-book the earliest risk-free slot.

What approximately home equipment additional or converted all the way through the 12 months?

This is where many landlords and assets managers slip. If you change a gasoline cooker, deploy a brand new boiler, or add a fuel fireplace side approach because of the yr, the usual annual check would possibly nevertheless be due, however you choose desirable documentation for the change.

A **gasoline cooker installation** or **gas fireplace installation** should be commissioned and proven as it should be. If the deploy is accomplished excellent, the security file and next annual inspection must align. If you simply replace an appliance and bypass suited checks, you danger a perplexing challenge later when an engineer arrives and unearths appliances that were under no circumstances recorded, or reveals pipework that desires adjustment.

If you're coping with a assets with blended installations, like a boiler plus an aircon formulation, renovations may create additional variables. For example, constructing work might regulate airflow paths that affect appliance ventilation. It is not really the renovation itself that's unsafe in such a lot situations, it's the unintended adjustments to air flow and flue routing. That is why "annual" is a minimum, and "after differences" is a easy-feel rule.

Common situations and the accurate next step

Sometimes the query "while do I want a gasoline safe practices certificates" is simply "what could I do properly now?" Here are just a few situations I see regularly.

If you are due for renewal soon, book the inspection early. If there may be any motive you think an equipment isn't running thoroughly, set up a fix first, then get the protection check carried out whilst all the things is secure.

If you stream residence and you are the recent tenant, ask even if there was a fresh fuel security look at various. If you're the landlord otherwise you own the property, you must have the certificates and have the opportunity to reveal it. If there was an extended gap, prioritize catching up.

If you run a industrial kitchen or a small retail unit, coordinate the appointment round carrier hours, yet do now not try and "stretch" the timeline. Gas safeguard isn't very a local the place convenience should still win each time.

And if you have a boiler it's behaving unusually, don't suppose it can be "just time for a provider." You could possibly [LPG Essex](#) be wanting at some thing that necessities **boiler repair**. Sometimes a machine that appears pleasant at the surface nonetheless has points published all over servicing, like efficiency transformations or combustion readings drifting through the years.

How lengthy the certificate remains valid

The certificates is in general legitimate for year from the date of the inspection. That capability you plan your next inspection around the expiry window, not round your comfort. If it expires, you continue to need to manage the take a look at, however the documents and compliance hazard turns into greater problematic.

The unique activity for how dates are managed and the way certificate are brought relies for your situations and regional standards. If you are a landlord, your original method and letting agent practices additionally come into play. When doubtful, deal with it like healing refills, it's far more secure to do it earlier the closing dose runs out.

Gas security certificate start, report retaining, and tenant expectations

For rented properties, there's many times an expectation that tenants receive the certificate and know it has been finished. The certificate itself carries data of the estate, the engineer, and the appliances inspected. Some landlords like to preserve a folder of certificates for his or her personal records, and that behavior is value maintaining.

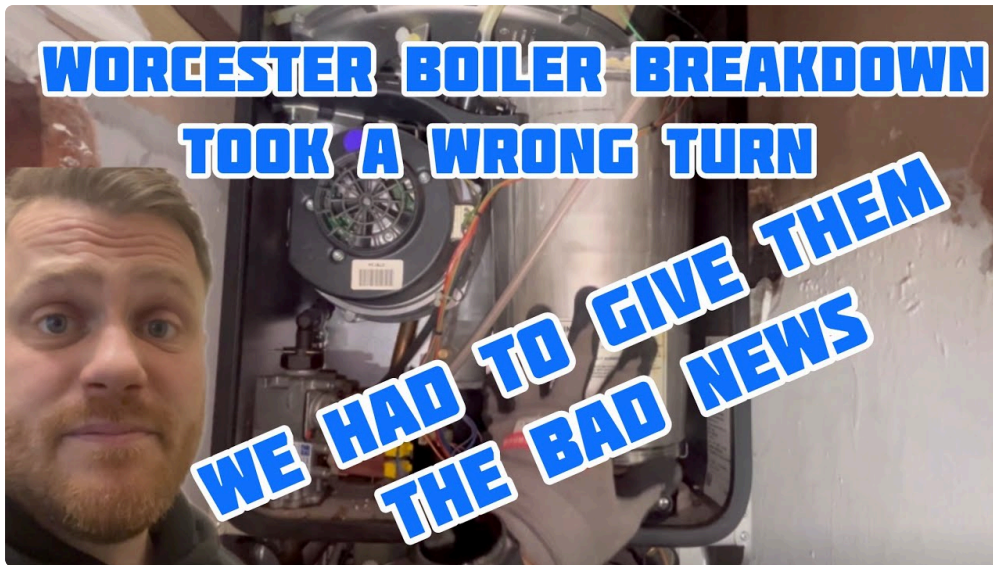
A simple lesson from feel: don't have faith in emails floating round inboxes. Keep a clear electronic reproduction, and if one can, keep a stored folder consistent with belongings. If you ever desire to show compliance quick, you can be comfortable you did.

Also, make it smooth for tenants to remember what "checked" way. A lot of struggle happens while individual expects that the engineer will restore every thing on the spot. Safety tests don't seem to be magic, they recognize complications and then help subsequent steps. Clear conversation helps every person be given the actuality of maintenance and renovation.

Two extraordinary aims human beings mixture up, defense and longevity

People sometimes ask for a fuel protection certificates and also prefer their boiler to be riskless for years. Those ambitions overlap, however they're no longer an identical.

A certificate confirms protection at a level in time. Reliability and longevity come from consistent renovation, good formula steadiness, and getting worries constant early. If you need the most interesting results, it helps to mix your annual safety look at various with a scheduled **boiler service**, and to address same procedure troubles inclusive of bad move. When I propose more steps like a force flush, it's also for the reason that the process signs and symptoms suit, now not because it feels like an honest conception.



The same theory applies to gas fires and cookers. A gasoline **fire service** facilitates avert combustion reliable, and an exact achieved **fuel fire installation** matters on account that the flue and ventilation association recognize how adequately the equipment can operate. A **fuel cooker installation** should always be true at the outset so you will not be troubleshooting leaks, negative combustion, or awkward clearance considerations later.

Mini record sooner than you book (so the appointment runs easily)

Here is a brief set of items you would do in advance of time that saves the two you and the engineer a headache:

- Make a listing of all gas appliances in the belongings, together with boilers, gasoline fires, and any fuel cookers
- Confirm even if the fuel is LPG or mains gasoline, when you recognise it
- Ensure entry is it is easy to to the appliance destinations and any crucial panels or flues
- Tell the engineer about any up to date faults or ameliorations, even in the event you feel they are minor

If you persist with that, you minimize the percentages of an incomplete rfile, a 2d talk over with, or a late discovery that an appliance become not inspected whilst it should had been.

What which you could expect the engineer to record

The certificates must be exact, and that calls for transparent notes and checks. While the details vary through equipment type, it often captures the very important results of the inspection and any required consequences.

To offer you a feel of what it probably covers, the engineer will ordinarily checklist:

- Identification tips and the date of inspection

- Results for both appliance inspected (no matter if safe, any moves essential)
- Any deficiencies stumbled on, together with required upkeep or ventilation concerns
- Information approximately the engineer and what skills apply
- Confirmation that vital protection tests have been carried out

If you ever get a certificate and also you %!%%edc82e84-bfa2-4c6e-beef-a069c094fc16%%!%% tell which appliances have been integrated, treat that as a purple flag. Ask for explanation or a corrected document if obligatory.

If you might be coping with numerous properties or houses with blended services

When you arrange several residences, a gas protection certificates time table will become a logistics assignment. You can get stuck out by using long go back and forth instances, tenant entry matters, or properties the place renovations are mid-flight.



The high-quality technique I even have observed is to run a effortless forward plan. Book the subsequent inspection as a rolling challenge, not as a ultimate-minute scramble. If an equipment is due for a service anyway, mix the visits while that you can imagine. It continuously works out more cost effective, and it reduces the wide variety of occasions tenants have to take care of get right of entry to.

If your portfolio additionally entails projects like **aircon** installation, **air conditioning** servicing, or primary plumbing work, avoid the trades separate to your planning. Coordinating get right of entry to and scheduling is excellent, but overlapping everyday jobs can blur who exams what. You favor the gas engineer doing the gas work and the listing, and also you need plumbers or HVAC engineers doing their materials with no going in both other's safety remit.

FAQs humans ask excellent until now the engineer arrives

Do I need a fuel security certificates for each equipment?

If the appliances are gas appliances within the estate and you might be required to prepare assessments, the inspection have to quilt the appliances that are section of your obligations. The engineer will pretty much check up on all vital appliances and file effects. If an equipment is inaccessible, individual, or no longer

attached, the engineer will take care of it effectively yet you should still not imagine it'll be blanketed with out being examined.

Can the engineer predicament the certificate if repairs are crucial?

That relies on the character of the fault and even if the appliance will probably be made protected in the course of the go to. If it %!%edc82e84-bfa2-4c6e-pork-a069c094fc16%!%, it's possible you'll need a restoration first and a comply with-up association. The key's protection and the accuracy of the record, now not dashing documents.

What if I converted a boiler for the time of the yr?

A new boiler installing must always be as it should be commissioned and checked. After that, your subsequent gas safeguard take a look at will nonetheless apply the yearly cycle, however one could would like to align your repairs schedules so the rfile remains tidy and compliance hazards live low.

Is a fuel safe practices money almost like a boiler provider?

Not precisely. They overlap in exercise, yet a safety determine is ready security comparison and certification. A boiler service is maintenance with a focus on overall performance and put on. Many employees mix them, that is as a rule the most useful strategy.

Final conception that allows you make superior decisions

When it involves gas defense certificates timing, the neatest technique is straightforward: treat the inspection as the two a compliance project and a possibility to trap problems early. If your boiler wishes awareness, in the event that your gasoline hearth behaves otherwise, or in the event that your fuel cooker setup is component to a busy kitchen, you get more suitable effects for those who do no longer wait until the last day.

Book early, make home equipment obtainable, and pick an engineer who records simply and explains plainly. You will sleep better, you'll decrease the danger of disruption, and you will have the paperwork that topics while it matters.